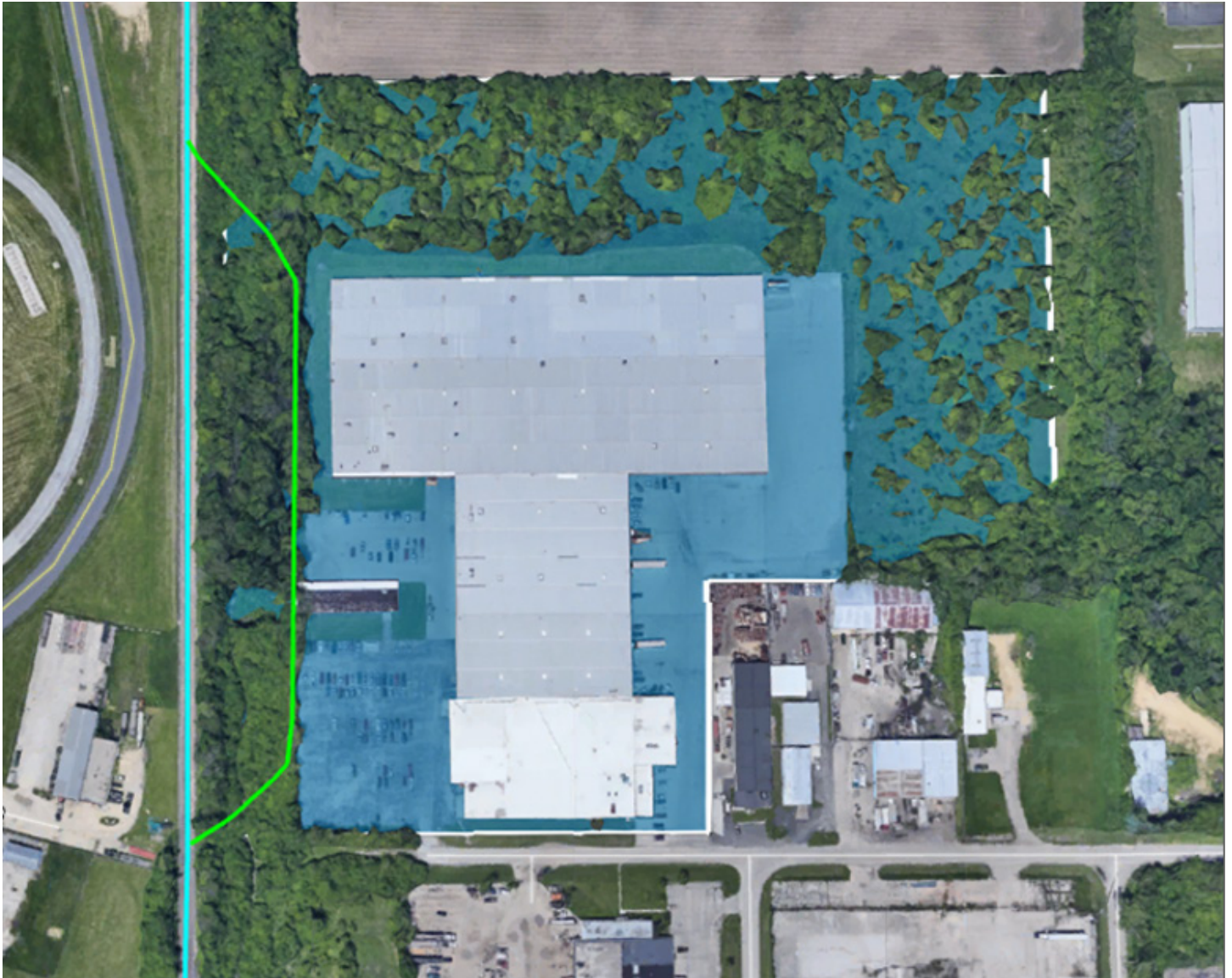


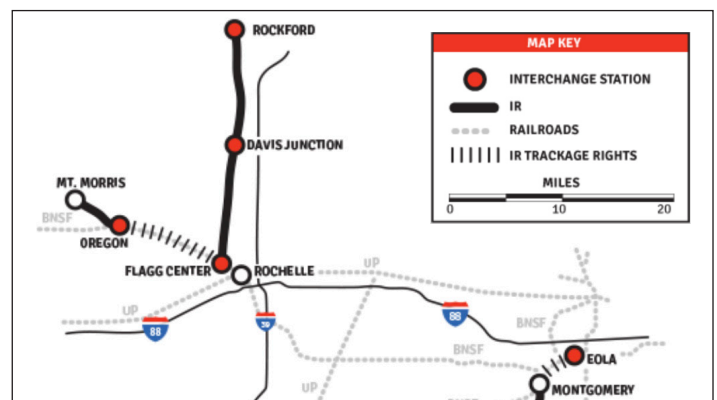
ROCKFORD, ILLINOIS • WINNEBAGO COUNTY

1122 Milford Avenue



Site Specifications

Address	1122 Milford Avenue
County	Winnebago
Site Type	Existing
Acres	24.6
Rail Frontage	1,069
Rail Spur	No
Building sq. ft.	305K
Building Height	
Zoning	Industrial



ROCKFORD, ILLINOIS • WINNEBAGO COUNTY

Area Highlights



The **Rockford Region** has established nimble, industry specific, and customized education-to-workforce pipelines ensuring business here have the skilled workforce essential to filling jobs that are good today, tomorrow, and in the future.

ROCKFORD AREA Rapid economic development

Well-known global, national and regional companies operate manufacturing plants and distribution points including:



Centrally Located

Ideal interstate and railroad connections – four interstates run through the region, businesses located here can reach 75 percent of U.S. businesses within a 24-hour truck drive.

LOCATION Proximity to Chicago

TRANSPORTATION ACCESS and CONNECTIVITY



Rail

Illinois Railway
interchanges with
BNSF, CSX and UP



Highway



FTZ #176

Designated
Foreign Trade Zone



Airport

Rockford
International
Airport

~ **282,572**

population of
Winnebago County (2019)

39.6

median age (2018)

88.7%

high school graduates

~ **147,881**

population of Brownsville
(2018)

\$53,345

median income (2014-18)

21.2%

Bachelor's degree or higher

WINNEBAGO COUNTY Statistics

WORKFORCE AVAILABILITY and COMMUTE TIME

- The two-county Rockford Metropolitan Statistical Area (Boone & Winnebago Counties) has a primary labor force of 176,700.
- Rockford's secondary labor shed extends even farther, with 515,000 workers within a 45-minute commute.
- This means individuals who live in Elgin, Illinois can commute to Rockford in the same or less time it takes to commute to Chicago.