

Rockforward2!
Connect. Act. Thrive.

momentum

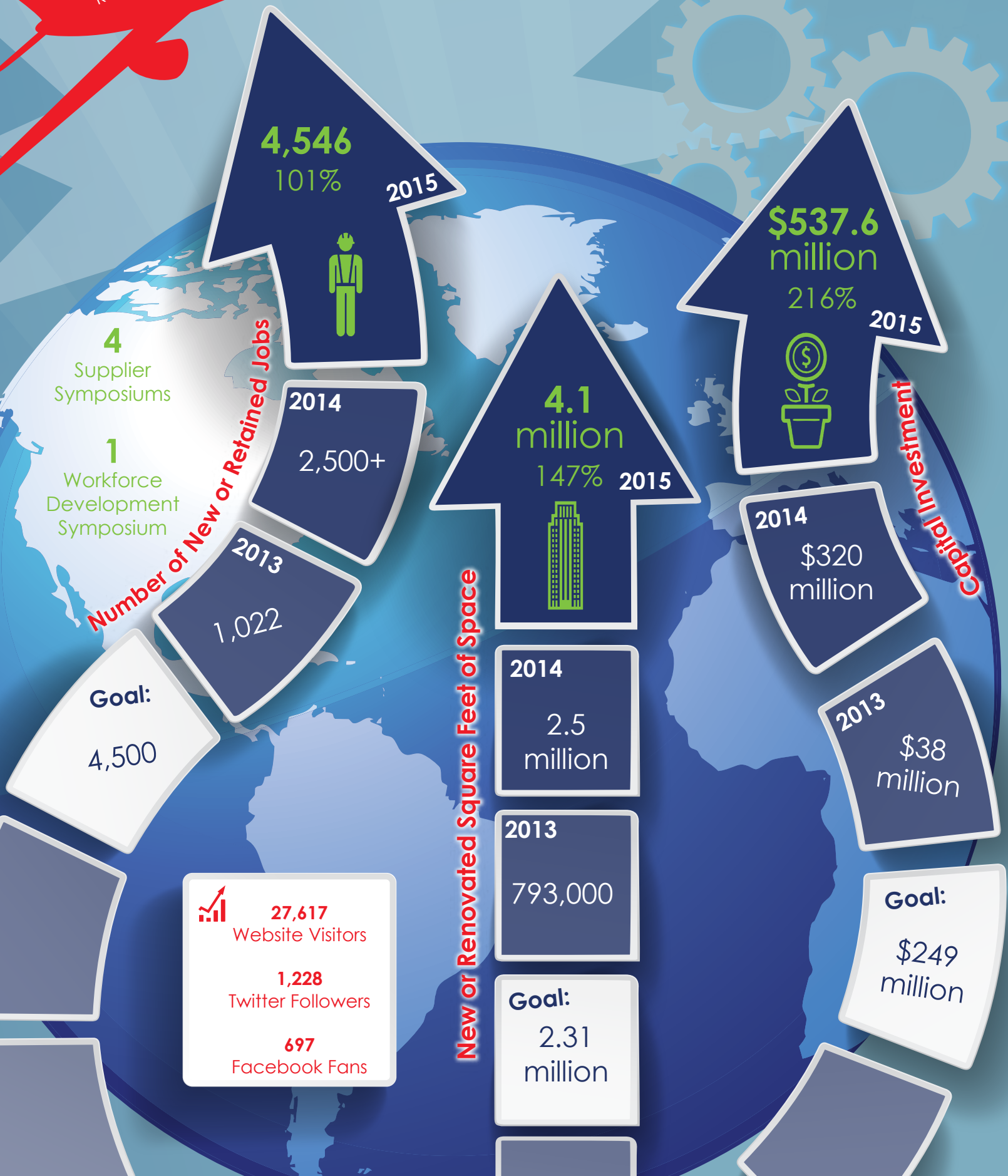
Results Report 2013 - 2015

Rockford
ILLINOIS  USA

ROCKFORD AREA ECONOMIC DEVELOPMENT COUNCIL

Rockforward2! Our Reach

ROCKFORD AREA AEROSPACE NETWORK
RAAN



Dear Investors and Stakeholders

Your passionate and relentless commitment to progress has built the current **momentum**. We are marching towards our full potential.

We face a much different economic climate today than we did in 2007 when we created *Rockforward!*. In this increasingly competitive world, each region of the Country must promote their distinctive assets. We must continue to work diligently to generate significant opportunities for our region. With these opportunities come JOBS and INVESTMENT.

Rockforward2! built upon the successes of *Rockforward!* and the lessons learned along the way, evolving into the strategies that created further success for the region. As you reflect upon the results achieved over the past three years, you will see **what all of us have accomplished – TOGETHER!**

Commitment is the key. The commitment of the RAEDC's Investors, Government Leaders, RAEDC Board of Directors, RAEDC Solution Teams/Committees, Local Businesses and Organizations to actively lead the Rockford Region. As our dedicated partners in this effort, together we have accomplished many great things of which we can all be proud.

On behalf of the RAEDC, thank you for your steadfast commitment, engagement and support.



Sagar Patel
2015 – 2016 Chairman of the Board



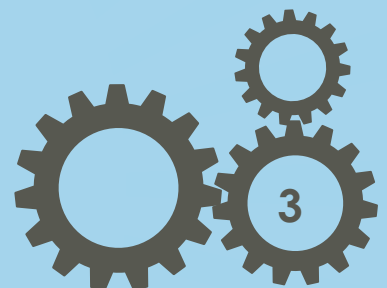
Michael Nicholas
President

Speak Economic Development

Economic Development is a comprehensive strategy that guides stakeholders to create an environment that promotes increased opportunities for capital investments, creating, retaining and expanding jobs that facilitate growth and enhance wealth while providing a stable tax base.

It also refers to sustained, concerted actions of communities and policymakers to improve the standard of living and economic health of the region, increasing the education rate of the entire population and develop a workforce to sustain all business sectors.

Your Region of Opportunity



Strategies Lead to Results: *Rockforward2!* Snapshot

Targeted Marketing & Recruitment

Marketed the regional aerospace cluster at multiple industry trade shows: MRO Americas, Paris Air show, EAA AirVenture, National Business Aviation Association (NBAA), and the Farnborough International Airshow in the United Kingdom. The branding of RAAN in more than 10 industry related publications resulted in more than 400,000 impressions.

Business Attraction efforts attracted the attention of the Chicago Tribune when the Rockford Region was selected by Boeing as a top 3 contender out of 56 possibilities for the 777x airframe assembly.

Attracted over 500 national and international attendees to the 6th & 7th annual Go Global Trade Conferences.

Launched the Global Partnership Agreement with the Korean Trade-Investment Promotion Agency (KOTRA) and the City of Lidköping, Sweden with our municipalities within Winnebago County. The Swedish agreement was extended to 2016 and now includes 15 municipalities within Skaraborg County, Sweden.

Quality Connected Infrastructure

Advanced the Qualified Site Program to drive regional readiness for future development and enhance our competitive edge.

Increased regional collaboration: The Economic Development District of Northern Illinois, in partnership with the RAEDC and Northern Illinois University upgraded the region's Comprehensive Economic Development Strategy and incorporated McHenry County for the first time.

Emerging Opportunities Fund

2013: \$175,000 was awarded to Alignment Rockford: Advanced Teaching and Learning – Building Business Partnerships.

2014: \$75,000 was awarded to The Design & Production Makerspace Lab.

2015: \$125,000 was awarded to the External PR & Marketing Plan.

21st Century Talent

Techworks, a CNC fast-track training program, graduated 132 students between 2013 and 2014. There were also 12 organizations that received customized training at their facilities.

JiET-A, the Joint Institute for Engineering and Technology – Aerospace; an innovative partnership among aerospace companies and higher education institutions, won a national award from the University Economic Development Association.

Regional workforce development partners announced the attainment of 1,400 High School Equivalency Certificates (GED) in 2014, 40% more than their goal.

Thriving Business Climate

During *Rockforward2!*, 68 projects in the pipeline came from Voice of the Customer (VOC) visits; that accounts for 47% of all retention and expansion projects during that time.

Assisted 39 companies in receiving Illinois State Trade & Export Promotion (ISTEP) funding, resulting in a projected increase of over \$39 million in export sales.

US Congressman Adam Kinzinger boosted the Rockford Region in conjunction with RAEDC by hosting 4 supplier symposiums for aerospace matchmaking with Boeing, Lockheed Martin, AAR Corp and Northrop Grumman and 127 companies.

RAEDC Solutions Team & Committees

Rockforward! President's Circle

The Rockforward! President's Circle meets to discuss and take action on economic development priorities and strategies. RAEDC Investors contributing \$25,000 or more per year become members of the President's Circle, which met four times in 2014.



Sagar Patel, RAEDC Board
Chairman, Woodward, Inc. (CHAIR)

Audit Committee

The RAEDC Audit Committee consists of the Treasurer and at least three members from the Board of Directors and three Members at Large. The committee reviews and assesses financial principles and reporting, risks and controls, and the organization's independent auditors.



Daniel Ross, Williams-Manny, Inc.
(CHAIR)

Education Committee

- Work with regional partners to strengthen the workforce development pipeline
- Partner with local education organizations for life-long learning



Brad Long, Northwestern Illinois
Building & Construction Trades
Council (CHAIR)

Business & Community Relations Solutions Team

- Promote RAEDC to both current and prospective investors
- Internal marketing of RAEDC strategies and messages within the region



Paul Gaier, Rockford Register Star
(CHAIR)

Rockforward! Leadership Council

Leadership Council members respond to opportunities at a macro level, placing an Emerging Opportunities Fund annually at their disposal for investment in mutually-agreed-upon, forward-thinking initiatives to leverage positive change for economic development of the region. RAEDC Investors contributing \$10,000 or more per year become members of the Rockforward! Leadership Council.



Michele Petrie, BMO Harris Bank,
(CHAIR)

Nominating Committee

An annual slate of candidates for the Board of Directors is prepared and recommended by the Nominating Committee. The Nominating Committee consists of three Directors and three Investors at Large.



Dr. W. Stephen Minore, Rockford
Anesthesiologists Associated, LLC
(CHAIR)

Business Attraction Solutions Team

- Qualified Sites and Shovel Ready Programs
- Marketing the region's assets outside the region



Mick Gronewold, Fehr Graham
(CHAIR)

Business Retention & Expansion Solutions Team

- Learn of resources needed to expand or retain business
- Increase awareness and participation in development programs such as succession planning



John Saunders, Larson & Darby Group
(CHAIR)

For more information about RAEDC Solutions Teams and Committees, contact Jimsi Kuborn, Vice President of Investor Relations at 815.987.8118 or JKuborn@RockfordIL.com.



2015 Board of Directors & Staff



EXECUTIVE COMMITTEE

Chairman of the Board: Sagar Patel, Woodward
Vice Chair/Treasurer: Steve Ward, Illinois Bank & Trust
Immediate Past Chair: Joel Sjostrom, Sjostrom & Sons, Inc
Director at Large: Bill Roop, Alpine Bank
Director at Large: Dr. William Gorski,
SwedishAmerican Health System
Director at Large: Stan Kottke, UTC Aerospace
Systems
Director at Large: Sunil Puri, First Midwest Group
Director at Large: David Schertz, OSF HealthCare
Leadership Council Chair: Michele Petrie, BMO Harris
Bank N.A.
Business Attraction Solutions Team Chair: Mick
Gronewold, Fehr Graham
Business Retention & Expansion Solutions Team
Chair: John Saunders, Larson & Darby Group
Business & Community Relations Solutions Team
Chair: Paul Gaier, Rockford Register Star
Rockford Area Aerospace Network Chair: Jeffrey J.
Kaney, Kaney Group LLC
Mayor Lawrence J. Morrissey, City of Rockford
Chairman Scott Christiansen, Winnebago County
Michael Nicholas, Rockford Area Economic
Development Council

DIRECTORS

David Anspaugh, Northern Illinois Building
Contractors Association
R. Richard Bastian, III, Blackhawk Bank
Teresa Beach-Shelow, Superior Joining Technologies
Edward C. Berg, First Northern Credit Union
Steve Bois, Rockford Area REALTORS
Jerry Busse, Rockford Toolcraft, Inc.
John Chadwick, WREX-TV
Dr. Rena Cotsones, Northern Illinois University
George Gaulrapp, ComEd
Linda Gerber, Rock River Valley Blood Center
Alan Golden, IBEW / NECA
Thomas Green, Barrick, Switzer, Long, Balsley & Van
Evera
Tom Kress, Associated Bank
Jeff Layng, JP Morgan Chase
Penelope Lechtenberg, Hinshaw & Culbertson LLP
Brad Long, NW IL Building & Construction Trades
Council
Dr. W. Stephen Minore, Rockford Anesthesiologists
Associated, LLC

DIRECTORS (continued)

Fran Morrissey, The Morrissey Family Businesses
Ed Munguia, Stillman Bank
Tim Myers, WIFR-TV
Dan Parod, MercyRockford Health System
Mike Paterson, Mid-West Family Broadcasting
Mark Peterson, CherryVale Mall / CBL & Associates
Properties
Senator Dave Syverson
Dave Whitmore, IronWorkers Local Union 498

EX-OFFICIO VOTING

Mayor Dale Adams, Village of Rockton
Jon Bates, Community Foundation of Northern IL
Mayor Jerry Bolin, Village of Machesney Park
Einar Forsman, Rockford Chamber of Commerce
Steve Graceffa, Rock River Water Reclamation
John Groh, Rockford Area Conv. & Visitors Bureau
Mayor Darryl Lindberg, City of Loves Park
Paul Logli, United Way of Rock River Valley
Mike Mastroianni, Rock Valley College
Jeff Polsean, Greater Rockford Airport Authority
Dr. Alex Stagnaro-Green, U of I College of Medicine

EX-OFFICIO NON-VOTING

Todd Cagnoni, City of Rockford
Jarid Funderburg, Growth Dimensions of Belvidere/
Boone County
John Phelps, Rockford Local Development Corp.
David Young, Northwest Illinois Development Alliance
Winnebago County Economic Development

STAFF

Michael Nicholas, President
Stacy Bernardi, Vice President for Development
Jimsi Kuborn, Vice President of Investor Relations
Leilani Hillis, Director of Operations
Dennis McCarthy, Director of National Business
Development
Karl Franzen, Business Development Specialist
Nicci Mayfield, Investor Relations Coordinator
Debbie Van Sickle, Business Attraction Coordinator
Erin Marshall, Marketing and Communications
Coordinator
Bea Miller, Business Development Assistant





Rockford Area Economic Development Council Investors

As of December 31, 2015



President's Circle Investors (\$25,000+)

Alpine Bank
Building Trades/Project First Rate
City of Loves Park
City of Rockford
Comcast Business
ComEd
Fehr Graham
First Midwest Group, Inc.
Greater Rockford Airport Authority
IBEW/NECA
JP Morgan Chase
Larson & Darby Group
MercyRockford Health System
Mid-West Family Broadcasting
Northern Illinois Building Contractors Association
OSF Saint Anthony Medical Center
Rockford Area REALTORS
Rockford Public Schools District 205
Rockford Register Star
SwedishAmerican Health System
Townsquare Media
UTC Aerospace Systems
Village of Machesney Park
WIFR-TV
Winnebago County
Woodward, Inc.
WQRF TV / WTVO TV
WREX

Leadership Council Investors (\$10,000+)

Associated Bank
BMO Harris Bank
First Northern Credit Union
GE Aviation
Illinois Bank & Trust
Northern Illinois University
PCI Pharma Services
Rock River Water Reclamation District
Rockford Area Convention & Visitors Bureau
Rockford Bank & Trust
Rockford Chamber of Commerce
Rockford Park District
Sjostrom & Sons, Inc.
SPX Hydraulic Technologies
Thermo Fisher Scientific
Williams-Manny Insurance Group

Rockforward! Premier Investors (\$5,000+)

AT&T
Blackhawk Bank
Giovanni's Restaurant & Convention Center
J.L. Clark
Nicor Gas
PNC Bank
OrthoIllinois
Rock River Valley Blood Center

Rockforward! Premier Investors (cont.)

Rockford Anesthesiologists Associated, LLC
Rockford Toolcraft, Inc.
RSM US LLP
Stillman Bank
Village of Rockton

Rockforward! Investors (\$2,000+)

Accuride Wheel End Solutions
Advanced Heat Treating, Inc.
Alpha Controls & Services LLC
American Precision Assemblers, Inc.
American Standard Circuits, Inc.
Arc Design Resources, Inc.
Baker Tilly Virchow Krause, LLP
Ballard Properties
Barrick, Switzer, Long, Balsley & Van Evera
Bergstrom Inc.
C.H. Robinson Worldwide, Inc.
CEANCI
Chartwell Agency
Chastain & Associates
Chem Processing, Inc.
CherryVale Mall / CBL & Associates Properties
City of South Beloit
CliftonLarsonAllen LLP
Clinkenbeard & Associates Inc.
Community Foundation of Northern Illinois
Concentric Rockford Inc.
Cord Construction Company
Crawford, Murphy & Tilly, Inc.
Crimson Pointe Assistant Living
Crusader Community Health
Danfoss Power Electronics
DCEO Office of Regional Outreach
Esterline Control Systems BVR Technologies
Excelsior, Inc.
Field
First National Bank
Forest City Gear Co., Inc.
Fridh Corporation
Gary W. Anderson Architects
Global Display Solutions, Inc.
Greenlee - A Tectron Company
Gypsum Supply Co.
Hampton Properties
Harlem Consolidated School District 122
Helen Hill Communication
Hinshaw & Culbertson LLP
Holiday Inn Express/Rock Hospitality
Holmstrom & Kennedy, P.C.
Ingenium Aerospace
Ingenium Technologies Corp.
IronWorkers Local Union 498
J & M Plating Inc.
Judson University
Kaney Group LLC
Key Realty, Commercial & Industrial

Rockforward! Investors (cont.)

Kishwaukee College
LandMark Real Estate Group LLC
Leading Edge Hydraulics
Lowe's Companies, Inc.
MembersAlliance Credit Union
Meridian
Merrill Lynch
Midwest Aero Support, Inc.
Midwest Community Bank
Missman, Inc.
Nordic Investments
Northern Illinois Service Co.
Northwest Bank
Ogle County
Powmet, Inc.
QPS Employment Group
Rasmussen College
Ringland-Johnson, Inc.
Rock Valley College
Rockford Career College
Rockford Housing Authority
Rockford Mutual Insurance Company
Rockford University
Safety Socket LLC
Savant Capital, LLC
Schmeling Construction Co.
Senator Dave Syverson
Serola Biomechanics, Inc.
SIDCOR, Marketplace of Rockford
Sikich LLP
Skandia, Inc.
Southern Imperial, Inc.
Specialty Screw Corporation
Spider Company, Inc.
Spring Creek Development Group
Superior Joining Technologies, Inc.
Technical Writing Consultants LLC
TH Foods, Inc.
The Morrissey Family Businesses
The North Central Group
Title Underwriters Agency
TSI Plastics, Inc.
U of I College of Medicine
U.S. Bank
Ultrasonic Power Corporation
United Way of Rock River Valley
UPS
US Signal Company
Venture One Real Estate/Rock 39
Industrial Park/Loves Park Corporate Center
Viking Chemical Company
Village of Cherry Valley
Village of Davis Junction
Village of New Milford
Village of Winnebago
Wipfli LLP
YMCA of Rock River Valley





With our eyes on the **momentum** we have successfully launched our new five year strategic plan.

Mission: The Rockford Economic Development Council (RAEDC) cultivates opportunities for primary job growth that increase the economic well-being of our region.

Vision: The Rockford Area Economic Development Council (RAEDC) propels the region to top 25 status, as the model for impactful economic development in partnership with regional organizations.

Rockforward20/20 Goals - Working Together with Regional Partners



Thank You

The important work of improving our economic strength and competitiveness is made possible only through the collaboration and support of our RAEDC investors. We are grateful for the support we receive in our work. Not only do we help companies grow locally and globally, but we also position the Rockford Region as an ideal location for businesses and industries. The overriding theme of *Rockforward2!* was **momentum**. We are proud of the progress achieved thus far but we cannot rest. The significant work of building a stronger and more sustainable economy must continue. If you are an investor, thank you for your generous support and please consider increasing your support. If you are not an investor and would like to learn how to get more involved with RAEDC at any level, we would be honored for the opportunity to discuss.

To find out how we will accomplish the goals set for the next five years, contact Jimsi Kuborn, Vice President of Investor Relations at JKuborn@RockfordIL.com or 815.987.8118.

